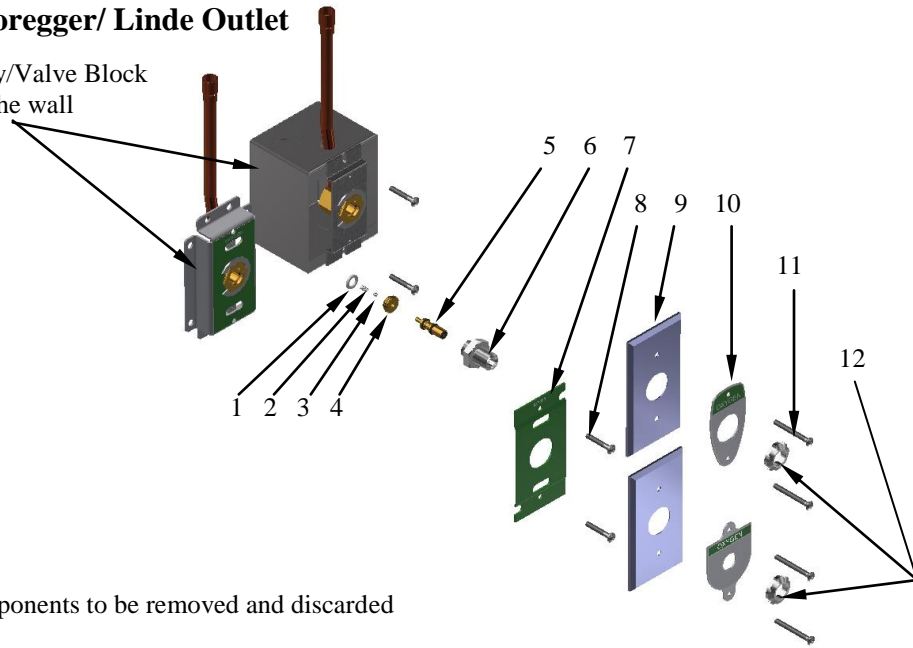


FOR TRI-TECH MODEL NUMBERS:

F3104 Nitrous Oxide F3112 Nitrogen F3116 Medical Air F3122 Medical Vacuum F3124A Oxygen

Melco/ Foregger/ Linde Outlet

Back Body/Valve Block
in the wall

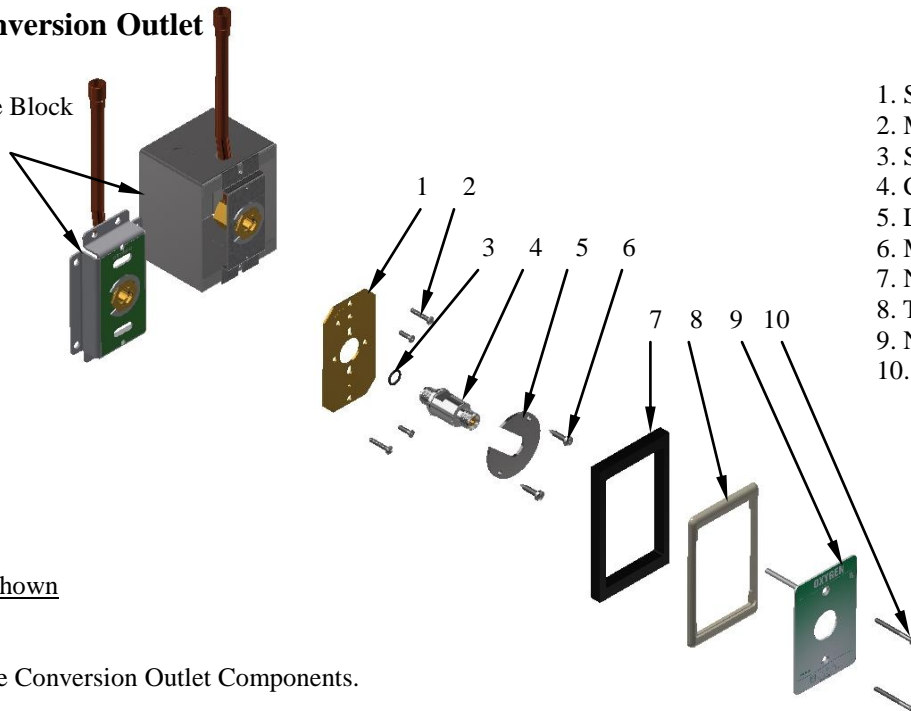


1. Sealing Washer
2. Spring
3. Ball Seat
4. Retainer
5. Plunger Assembly
6. Outlet Body Assembly
7. Sub-Mounting Plate
8. Mounting Screws
9. Cover Plate
10. Name Plates
11. Mounting Screws
12. Locknut

Figure 1
Outlet Components to be removed and discarded

Tri-Tech Conversion Outlet

Back Body/Valve Block
in the wall



1. Sub-Mounting Plate
2. Mounting Screws
3. Sealing Washer
4. Conversion Outlet
5. Locking Plate
6. Mounting Screws
7. Name Plate Spacer
8. Trim Plate
9. Name Plate
10. Mounting Screws

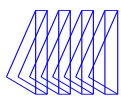
Oxygen Outlet Shown

Figure 2
Installation of the Conversion Outlet Components.

Tools Needed

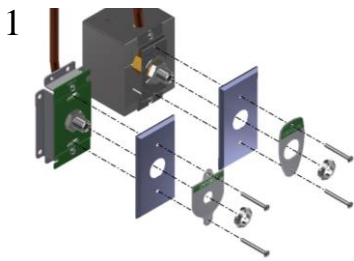
- | | | |
|---------------------------|--------------------|-----------------|
| 1- Phillips Screwdriver | 1- 7/8" Hex Wrench | |
| 1- Flat Blade Screwdriver | 1- 5/8" Hex Wrench | 3/16" Drill Bit |

Refer to reverse side for detailed instructions

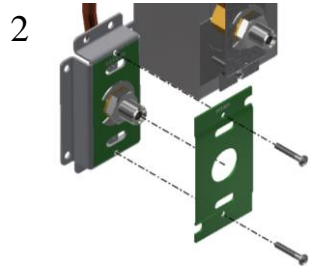


Melco/ Foregger/ Linde Outlet Disassembly

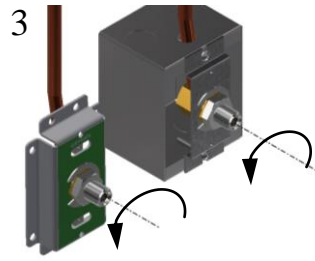
Close the area zone valve. Warning: Do not close zone valve until all personnel have been advised of the intended service and all systems requiring medical gas are being supplied from portable or alternate supplies.



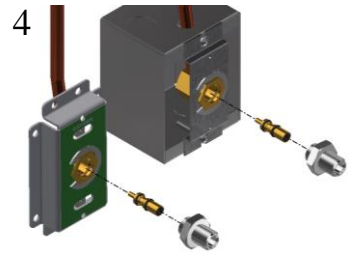
Unscrew locknut and mounting screws. Remove nameplate and cover plate.



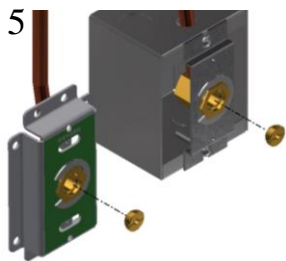
Remove the mounting screws and the Sub-mounting plate.



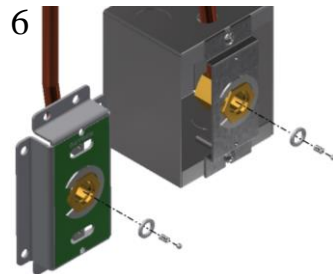
Using a 7/8" hex wrench, turn the outlet body counter-clockwise to unscrew.



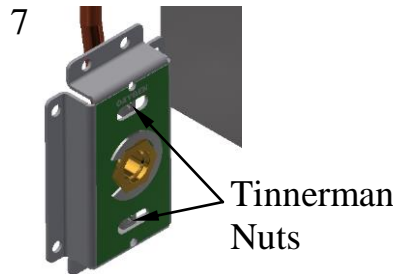
Remove the outlet body and plunger from the valve block.



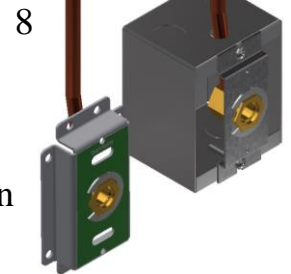
Use a flat blade screwdriver to unscrew and remove the Retainer.



Remove the Ball, Spring, and Seal Washer from the valve block.

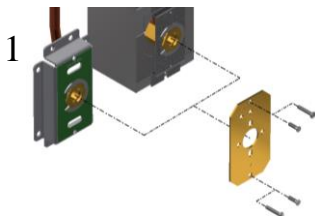


Use a flat blade screwdriver or a pair of pliers to dislodge the Tinnerman nuts.

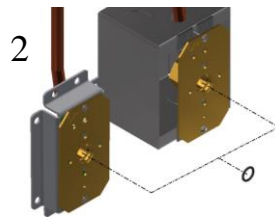


Clean all loose chips and debris from the outlet block.

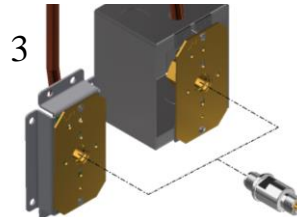
Tri-Tech Conversion Outlet Installation Instructions



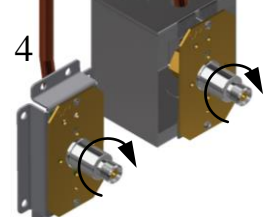
Attach Sub-mounting plate loosely to valve block with the same name on the front with self-drilling screws or the tamper proof screws. **DO NOT TIGHTEN.**



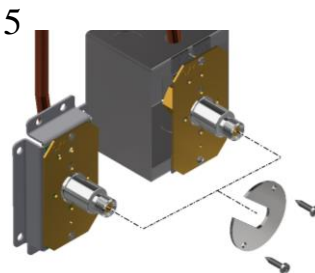
Insert sealing washer into the valve block cavity being careful not to damage the washer.



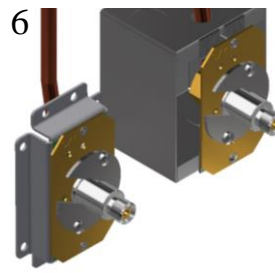
Insert outlet in block cavity and turn clockwise to screw outlet into block.



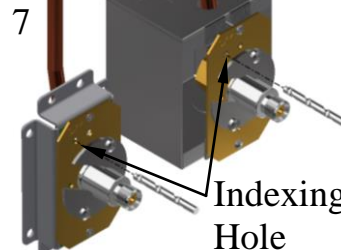
Use a 5/8" wrench to tighten the outlet sandwiching Sub-mounting plate between valve block and outlet.



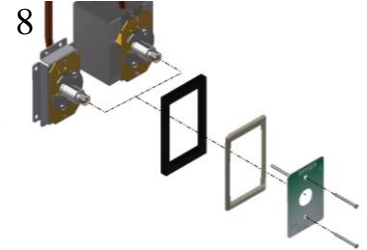
Tighten the Sub-mounting plate screws. Slide locking plate over mill flats and secure plate with two self-drilling screws.



Test the outlet in accordance with NFPA Pamphlet 99.



Using indexing hole having gas designation stamp adjacent to it as a guide, drill a 3/16" hole through the existing back plate.



Position spacer over Sub-plate and align the trim plate and cover plate so the indexing pin slides through the indexing hole drilled. Attach with mounting screws. Conversion complete. Attach mating equipment.