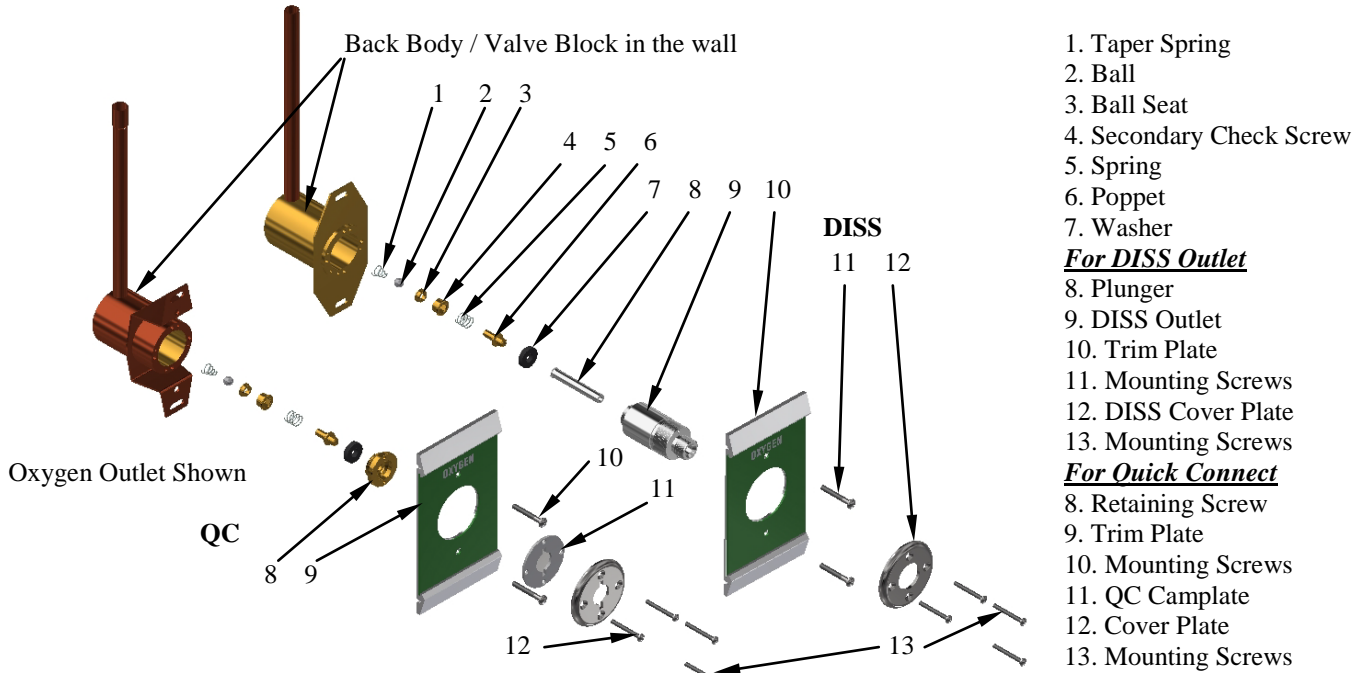


USE TRI-TECH CONVERSION MODEL NUMBERS:

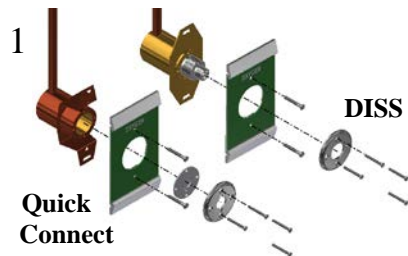
F3704 Nitrous Oxide F3712 Nitrogen F3716 Medical Air F3722 Medical Vacuum F3724A Oxygen



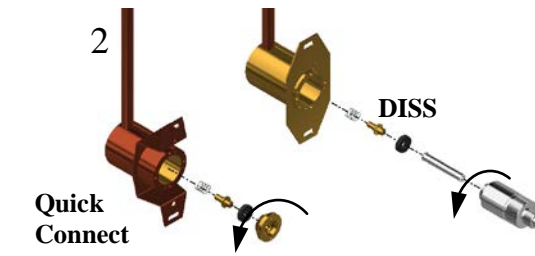
Outlet Components to be removed and discarded

Disassembly Procedures:

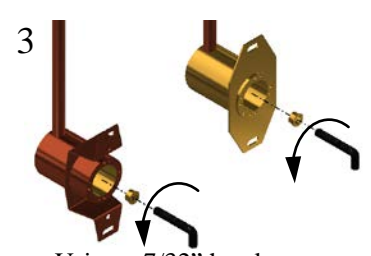
Close the area zone valve. *Warning:* Do not close zone valve until all personnel have been advised of the intended service and all systems requiring medical gas are being supplied from portable or alternate supplies. Bleed the residual gas pressure from the outlet.



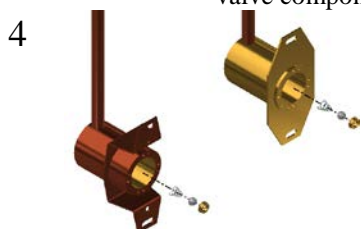
Remove the (4) mounting screws and outlet cover plates and QC camplate, also remove mounting screws and the trim plate.



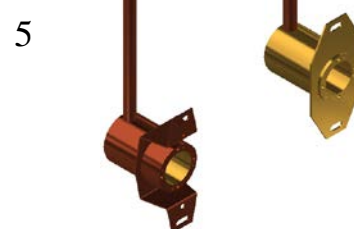
Using the spanner wrench, turn the QC retaining screw or DISS outlet counterclockwise to unscrew it from the valve block, also remove the valve components.



Using a 7/32" hex key wrench, unscrew the secondary check screw.



Remove the ball seat, ball, and taper spring from the valve block.



Clean all loose chips and debris from the valve block.

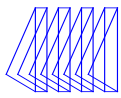
Tools Needed

1- Phillips Screwdriver

1- Oxequip Spanner Wrench
(Available from Allied Health Care)

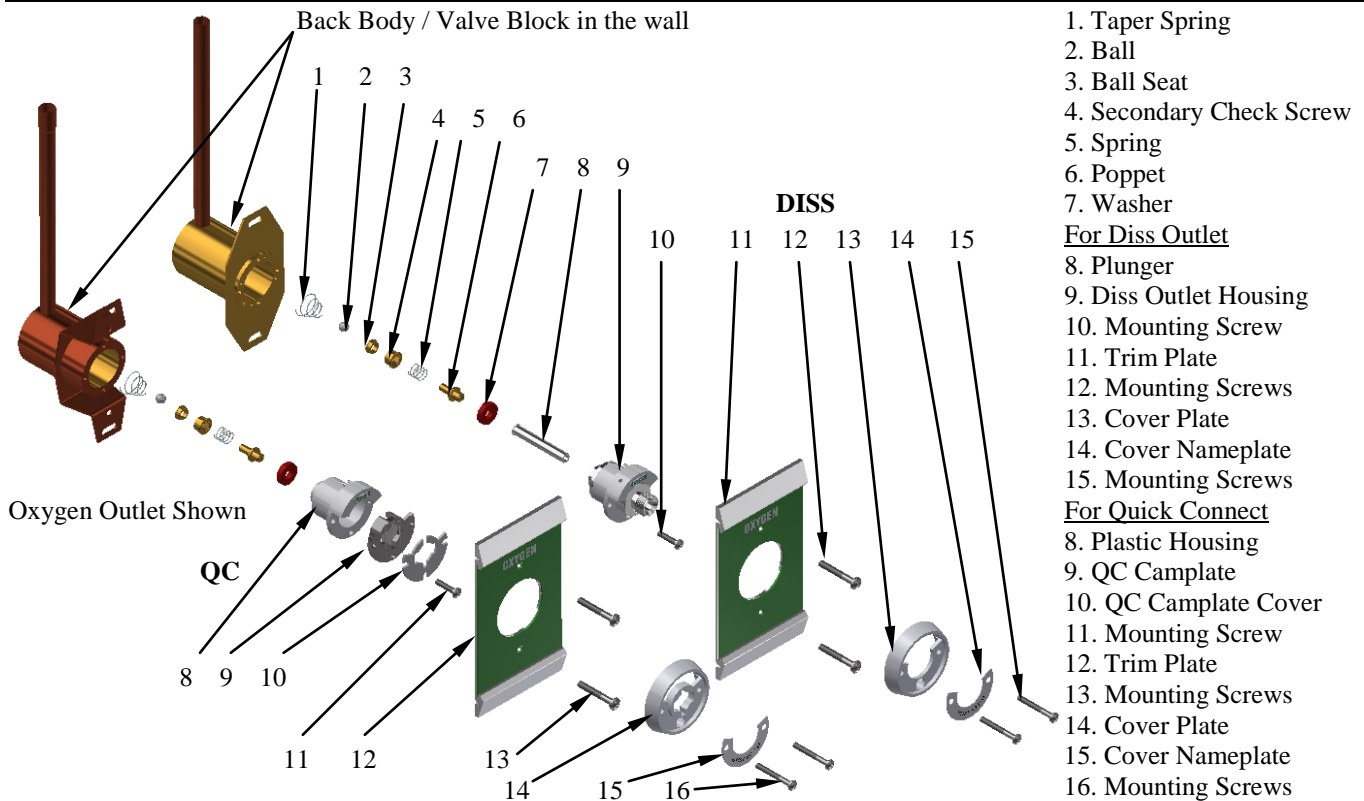
7/32" Hex Key Wrench

See page 4 of 4 for installation instructions of the Tri-Tech conversion



USE TRI-TECH CONVERSION MODEL NUMBERS:

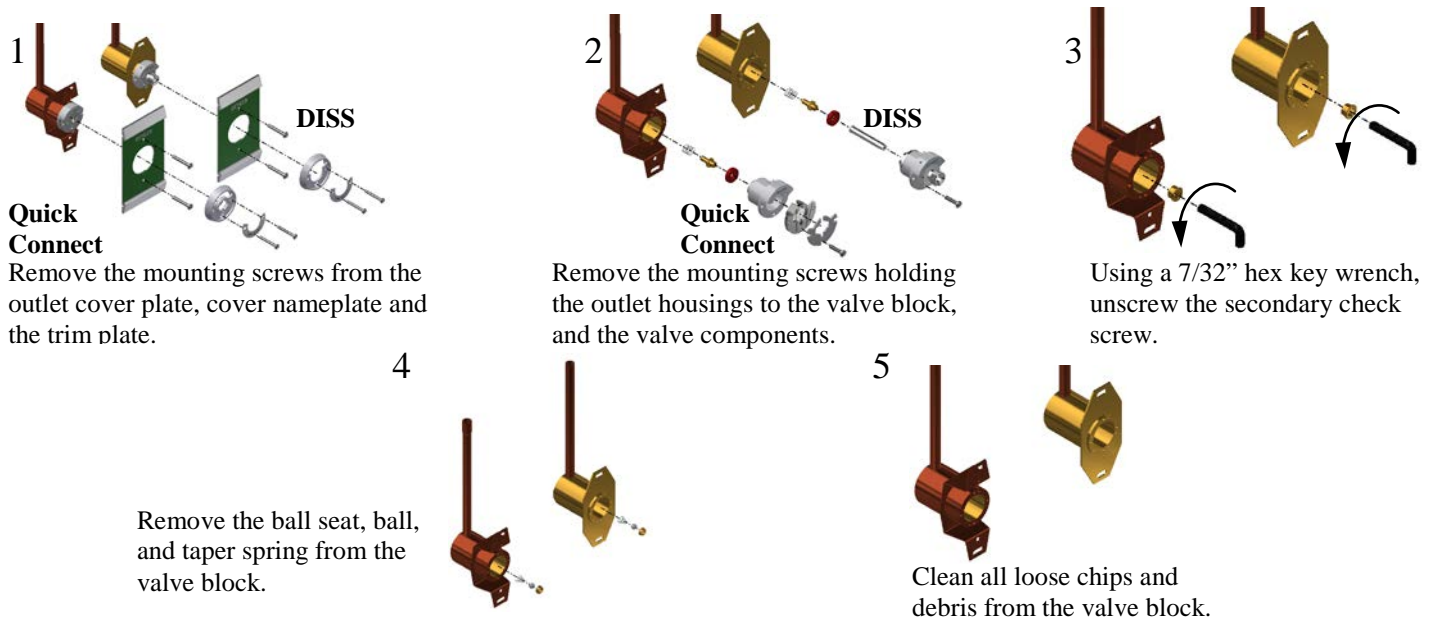
F3704 Nitrous Oxide F3712 Nitrogen F3716 Medical Air F3722 Medical Vacuum F3724A Oxygen



Outlet Components to be removed and discarded

Disassembly Procedures:

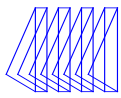
Close the area zone valve. Warning: Do not close zone valve until all personnel have been advised of the intended service and all systems requiring medical gas are being supplied from portable or alternate supplies. Bleed the residual gas pressure from the outlet.



Tools Needed

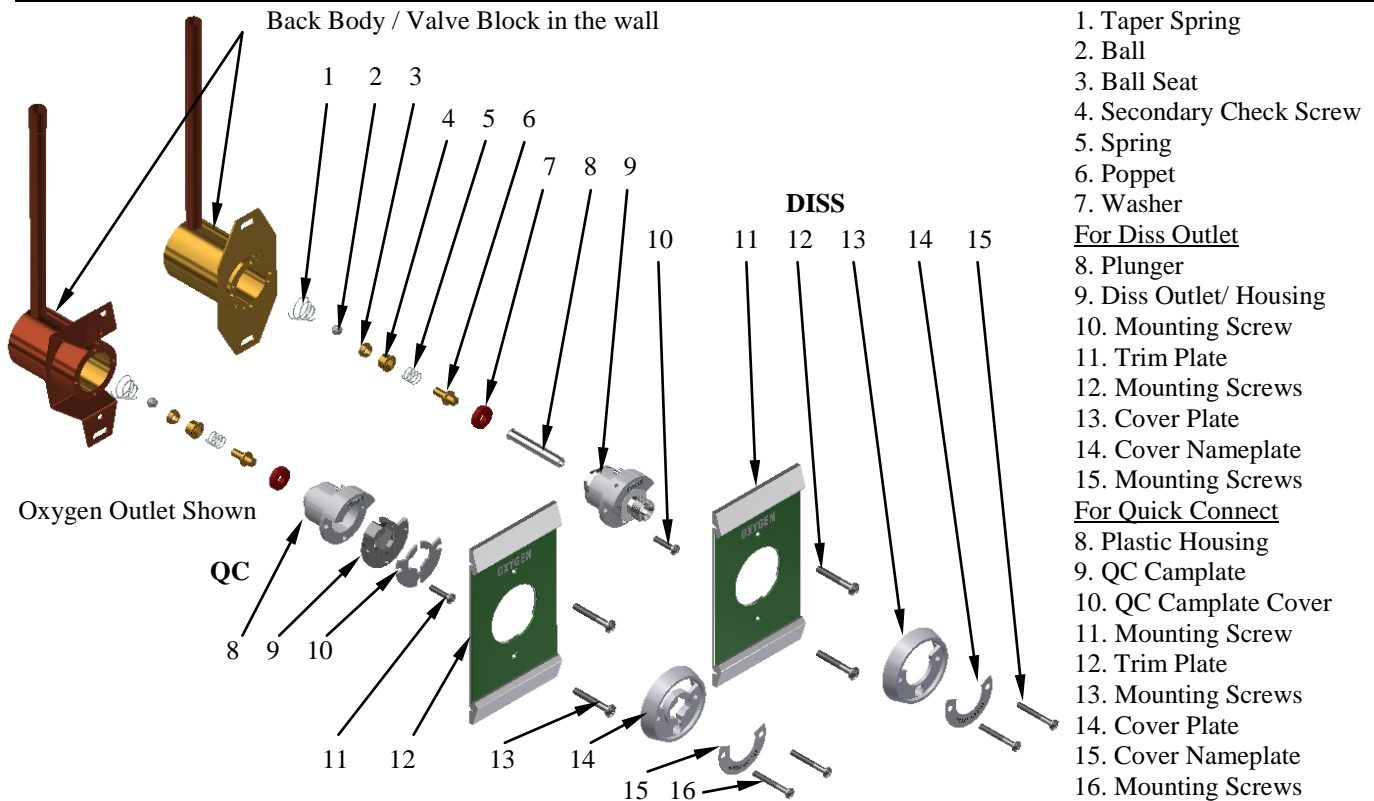
- 1- Phillips Screwdriver
- 7/32" Hex Key Wrench

See page 4 of 4 for installation instructions of the Tri-Tech conversion



USE TRI-TECH CONVERSION MODEL NUMBERS:

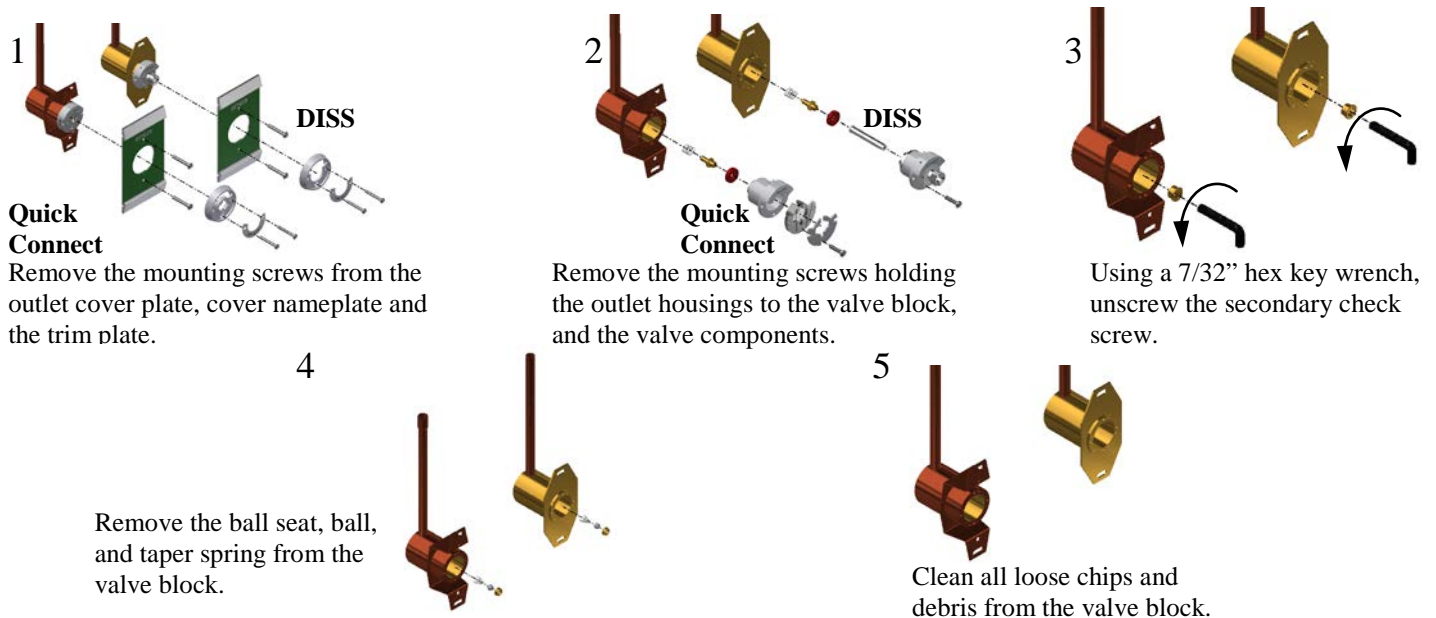
F3704 Nitrous Oxide F3712 Nitrogen F3716 Medical Air F3722 Medical Vacuum F3724A Oxygen



Outlet Components to be removed and discarded

Disassembly Procedures:

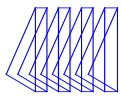
Close the area zone valve. Warning: Do not close zone valve until all personnel have been advised of the intended service and all systems requiring medical gas are being supplied from portable or alternate supplies. Bleed the residual gas pressure from the outlet.



Tools Needed

- 1- Phillips Screwdriver
- 7/32" Hex Key Wrench

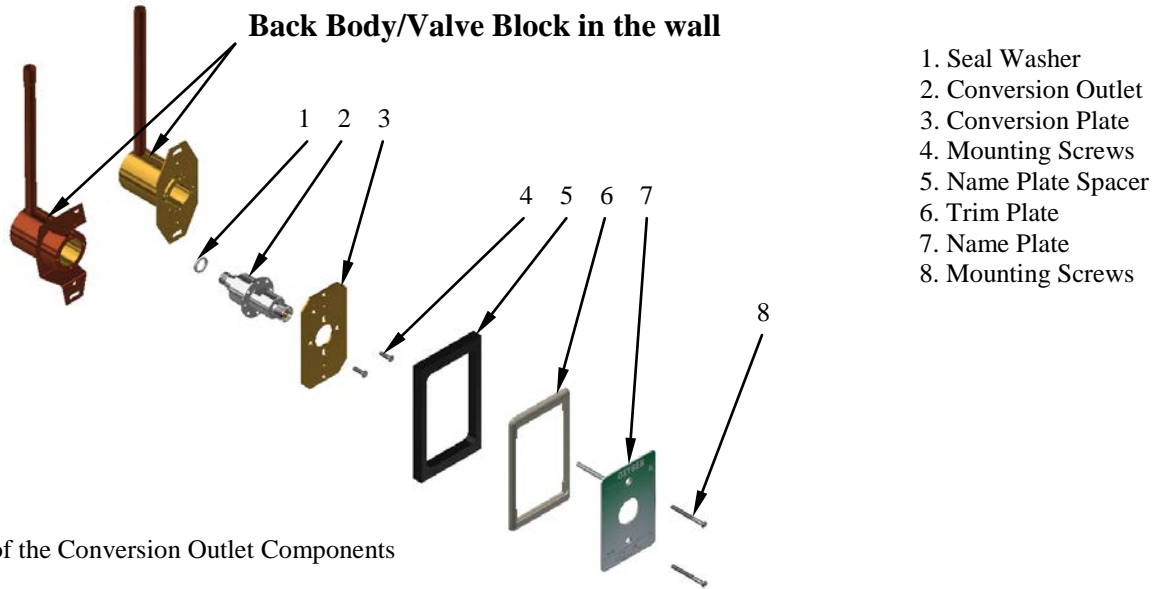
See page 4 of 4 for installation instructions of the Tri-Tech conversion



FOR TRI-TECH CONVERSION MODEL NUMBERS:

F3704 Nitrous Oxide F3712 Nitrogen F3716 Medical Air F3722 Medical Vacuum F3724A Oxygen

Tri-Tech Conversion Outlet



Installation of the Conversion Outlet Components

Tri-Tech Conversion Outlet Installation Instructions

1

Drill Out

Drill two holes in the flange. Drill holes 1 3/16" above center and below center using a 3/16 drill bit.

2

Slide the Teflon ® sealing washer over the threads on the back of the conversion outlet.

3

Insert the conversion outlet into the valve block cavity and turn clockwise to screw outlet into position **HAND TIGHT**.

4

Use a 5/8" hex wrench; tighten the outlet approx., 1/4 to 1/2 turn and line up top and bottom mounting holes in outer flange.

5

Align the Sub-mounting plate so that the gas name can be read from the front. Attach with screws and then test outlet in accordance with NFPA 99.

6

Indexing Hole

Using indexing hole having gas designation stamp adjacent to it as a guide, drill a 3/16" hole through the existing back plate.

7

Indexing Pin

Position spacer over sub-plate and align the trim plate and name plate so the indexing pin slides through the indexing hole drilled. Attach with mounting screws.

8

Conversion complete. Attach mating equipment.

Tools Needed

1- Phillips Screwdriver

1- 5/8" Hex Wrench

3/16" Drill Bit